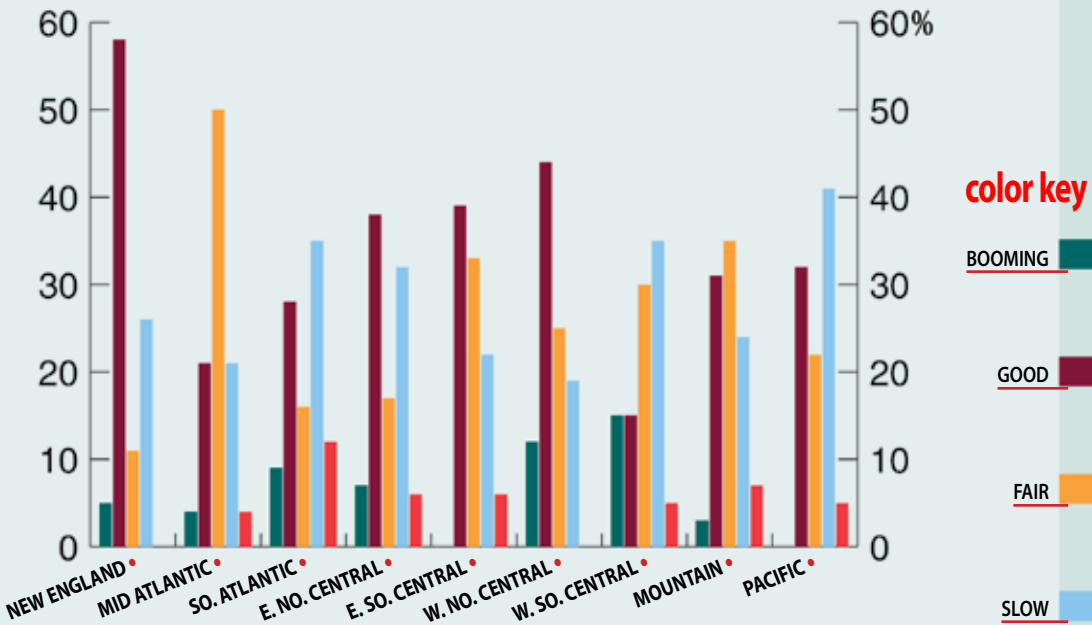


The Financial Crisis: How are You Doing?

BUSINESS FROM JULY TO NOW BY REGION

None of the laboratory respondents in New England or the West North Central states of Minnesota, Iowa, Missouri, North and South Dakota, Nebraska and Kansas say business is bleak; none of the respondents in the East South Central (Kentucky, Tennessee, Alabama or Mississippi) or Pacific regions say business is booming.



BUSINESS FROM JULY TO NOW BY LAB SIZE

Among both the 3-5 person and 20-50 person laboratories, there are no reports of business being bleak; among 11-20 person labs and over 50 person labs, there are no reports of business booming.

